

## **Find and Replace 9.0 for Microsoft Access 2000, 2002/XP, 2003, 2007, 2010**

# **Contents**

### **Introduction**

This program provides a "Find and Replace" function for Tables (searching design elements such as field names, not the data in the table), Queries, Forms, Reports, Macros, and Modules (Access only provides Find and Replace for Modules/CBF). Find And Replace can be used to change names of objects through the entire database. In addition to facilitating name changes it has other uses, such as: a) changing the path in the connect string for attached tables (search for old path, replace with new; attachment gets refreshed) and b) searching for occurrences of a given function to enable you to change the parameters. The intended user of this module is a programmer.

### **Procedures**

[Installation](#)

[Starting Find And Replace](#)

[Using Find And Replace](#)

[Name Change Builder](#)

[Change Log](#)

[Cross-Reference Report](#)

[Set Property Wizard](#)

[Frequently Asked Questions](#)

### **Reference**

[Index](#)

[Ordering/Registration](#)

[Version Information](#)

[Where to find the most recent version](#)

[Contact/Support Information](#)

[Copyrights, Warranty, License Agreement, Registration Information](#)

[Glossary](#)

# Installation

1 Extract the replace9.mde (replace9x64.mde if you are using 64-bit Office) and replace9.hlp files to a directory of your choice. This directory must have permissions that allow write capability to the user who will use Find and Replace.

2 Make sure you are logged on to a user ID that has authority to install software. Generally this means the user is a member of the administrators or power users group.

Close any open Access sessions.

Start Access

Open the replace9.mde file. A form should open that has an Install button. Click this and it should install.

Note: If this is an update from a prior version 9 of Find and Replace and you used the add-in manager to install the prior version you might want to search your hard drives for all old copies of Replace9.mde and delete them.

3 Find and Replace now appears as a choice on the Tools menu under the Add-ins submenu. For Access 2007/2010 it appears in the Add-ins button on the Database Tools tab. In addition, when designing forms or reports, the control name change builder is available by pressing the "..." button to the right of the control name in the properties box. (note: Find and Replace will not appear in the Add-ins menu in the Visual Basic window; switch to the Access window to use Find and Replace).

4 If you have purchased a license for Find and Replace 9 you will need to enter your registration information to enable all features and turn it into the registered version. You can enter your registration code via the installation form, or you can open Find and Replace via Tools, Add-ins and either click on the "More Info" button on the Shareware 30 day Evaluation notice splash screen, or click on the "About" button on the main Find and Replace form in the upper left hand corner. Then click on "Enter Registration Code". Enter the name and company name exactly (except that case doesn't matter) as in your registration information and enter your registration code. You can also enter your registration code from the installation form mentioned above.

5. With Windows Vista, Windows 7, and Windows 2008 Microsoft does not include the WinHelp32 help program. You must install it yourself to be able to read the help file. See <http://support.microsoft.com/kb/917607>. Also, files downloaded from the internet will get tagged with an alternate data stream (in the filesystem; the Zone.Identifier stream) identifying it as from an external source (and therefore not trusted). The files you extract (via explorer) from a zip file from the internet will have this set also. The help file cannot be opened until you right click the file, select properties and on the General tab you should click the UNBLOCK button (if the button isn't there it isn't a problem). This is also the same reason you will get a warning message when opening the replace9.mde file. If you do the same for this file (UNBLOCK it) it will eliminate this warning.

## **Uninstalling**

To uninstall, click the About button on the main Find and Replace form. Then click the link titled "click here to un-install". This opens the installation form. You can click the un-install button on that form. After this you will need to close any open Access sessions so that Find and Replace is completely unloaded from memory. Then you can delete the replace9.mde file if you wish to totally delete Find and Replace.

Alternatively you can open the Replace9.mde file directly (this should be the first thing you do after starting Access). The installation form will pop-up and you can click the un-install button.

## **Installation Troubleshooting:**

### **Problem: The add-in won't start.**

A: Make sure the replace9.mde file does not have the read-only flag turned on (look at properties). This usually happens when you copy replace9.mde from a CDROM. Also make sure the user id has write permissions on the replace9.mde file and directory in which it is placed.

**Problem: I'm getting an error 5 message upon startup**

A: This has only been reported in conjunction with Windows 98. Rebooting the machine solves it.

**Problem: The installation failed. How can I manually add (or check) the registry entries?**

A: Run Regedit.

For Access 2000 go to the branch

HKEY\_LOCAL\_MACHINE\SOFTWARE\Microsoft\Office\9.0\Access\Menu Add-Ins

For Access 2002 go to the branch

HKEY\_LOCAL\_MACHINE\SOFTWARE\Microsoft\Office\10.0\Access\Menu Add-Ins

For Access 2003 go to the branch

HKEY\_LOCAL\_MACHINE\SOFTWARE\Microsoft\Office\11.0\Access\Menu Add-Ins

For Access 2007 go to the branch

HKEY\_CURRENT\_USERS\SOFTWARE\Microsoft\Office\12.0\Access\Menu Add-Ins

For Access 2010 go to the branch

HKEY\_CURRENT\_USERS\SOFTWARE\Microsoft\Office\14.0\Access\Menu Add-Ins

(note Access 2007/2010 may alternatively be put in HKEY\_LOCAL\_MACHINE if you want it accessible to all users)

Add a new Key (via menu option Edit, New, Key) named "&Find and Replace"

For Access 2000 this creates the branch

HKEY\_LOCAL\_MACHINE\SOFTWARE\Microsoft\Office\9.0\Access\Menu Add-Ins\&Find and Replace

For Access 2002 this creates the branch

HKEY\_LOCAL\_MACHINE\SOFTWARE\Microsoft\Office\10.0\Access\Menu Add-Ins\&Find and Replace

For Access 2003 this creates the branch

HKEY\_LOCAL\_MACHINE\SOFTWARE\Microsoft\Office\11.0\Access\Menu Add-Ins\&Find and Replace

For Access 2007 this creates the branch

HKEY\_CURRENT\_USERS\SOFTWARE\Microsoft\Office\12.0\Access\Menu Add-Ins\&Find and Replace

For Access 2010 this creates the branch

HKEY\_CURRENT\_USERS\SOFTWARE\Microsoft\Office\14.0\Access\Menu Add-Ins\&Find and Replace

To this branch, add the following values

a string value named "Expression" with a value of "=zFAR\_StartFindAndReplace()"

a DWord value named "Version" with a value of 3

a string value named "Library" with a value of "C:\mydirectory\replace9.mde" where c:\mydirectory is the directory in which you have placed the replace9.mde file.

For Access 2000 create a new branch (i.e. add a new key)

HKEY\_LOCAL\_MACHINE\SOFTWARE\Microsoft\Office\9.0\Access\Wizards\Property Wizards\Name\FARNameBuilder

For Access 2002 create a new branch (i.e. add a new key)

HKEY\_LOCAL\_MACHINE\SOFTWARE\Microsoft\Office\10.0\Access\Wizards\Property Wizards\Name\FARNameBuilder

For Access 2003 create a new branch (i.e. add a new key)

HKEY\_LOCAL\_MACHINE\SOFTWARE\Microsoft\Office\11.0\Access\Wizards\Property Wizards\Name\FARNameBuilder

For Access 2007 create a new branch (i.e. add a new key)

HKEY\_LOCAL\_MACHINE\SOFTWARE\Microsoft\Office\12.0\Access\Wizards\Property Wizards\Name\FARNameBuilder

For Access 2010 create a new branch (i.e. add a new key)

HKEY\_LOCAL\_MACHINE\SOFTWARE\Microsoft\Office\14.0\Access\Wizards\Property

Wizards\Name\FARNameBuilder

To that branch, add the following:

A DWord value named "Can Edit" with a value of 1

a DWord value named "Version" with a value of 3

a string value named "Description" with a value of "Smart Rename (Find and Replace)"

a string value named "Function" with a value of "zFAR\_RenameControl"

a string value named "Library" with a value of "C:\mydirectory\replace9.mde" where c:\mydirectory is the directory in which you have placed the replace9.mde file.

# Starting Find And Replace

Find and Replace appears as a choice on the Tools menu under the Add-ins submenu. For Access 2007/2010 it appears in the Add-ins button on the Database Tools tab. Select it. The Find and Replace form should appear.

Note: Find and Replace will not appear in the Add-Ins menu in the Visual Basic window; switch to the Access window to use Find and Replace.

Also, see [Using Find And Replace](#), [Control Name Change Builder](#), [Installing Find and Replace](#)

# Using Find And Replace

Specifying Find and Replace text

Specifying Where to search (Tables, forms, ...)

Form/Report Options (further limiting where to search)

Other Search Options

Find/Replace Logging.

When a match is found

What properties Find and Replace searches

Status/Progress Indication

# Specifying Find/Replace Strings

## Specifying one item to be searched for and replaced

Enter the text to be searched for (the "Find Text") in the "Find" combo-box (wildcards are not permitted). Enter the text that will replace it (the "Replace Text") in the "Replace With" box (if you are doing a Find only, you need not enter this but make sure to click the "Find Only" option box). If you desire that the text to be found must match the whole word (words consist of A-Z, a-z, \_, 0-9) check the "Match Whole Word/Name Only" box.

The screenshot shows a dialog box with a "Find:" text box containing "OldString" and a "Replace With:" text box containing "NewString". A checkbox labeled "Match Whole Word/Name Only" is checked. On the right, there are buttons: "New item", "Del item", "Clear List", and "Save/Load". A dropdown arrow next to the "Find:" box shows "1 / 1".

## Specifying multiple items to be found/replaced

The combination of the Find Text, Replace Text, and Whole Word option make up a find/replace specification. You may enter multiple find/replace specifications so that when you start the search, all find/replace specifications are done together (in parallel). (Note: the unregistered version is limited to two Find/Replace specifications). Define your first specification as described above. To add another find/replace specification, click the "New item" button. The "Find" and "Replace With" boxes will be cleared and you can enter your new, additional Find/Replace specification. To review all your find/replace specifications click the drop down button on the "Find" combo-box. All of your defined find/replace specifications appear in the drop-down list of the "Find" combo-box.

The screenshot shows the "Find:" dropdown menu open, displaying a list of three specifications. The "Replace With:" text box is empty. The "Match Whole Word/Name Only" checkbox is unchecked. The buttons on the right are "New item", "Del item", "Clear List", and "Save/Load". The dropdown arrow next to the "Find:" box shows "3 / 3".

Find	Replace With	Whole Word
OldString	NewString	0
AnotherString	Another_String	0
LastEntry	LastEntry2	1

You may select any of these find/replace specifications in order to edit, view, or delete them. To delete the item displayed, click the "Del Item" button. To clear the entire Find/Replace specification list click the "Clear List" button.

The last column in the Find drop-down indicates the value of the whole word option (0=off, 1=on) for that Find/Replace spec. *Note that the Whole Word option is not a global setting. It is independently specified for each find string.*

All items that appear in the drop down list will be searched for (and replaced) when you press the "Find" button.

The order of search and replace within a target string (e.g. property value, ...) is the order in which the Find/Replace specs appear in the drop down list (the order in which they are added).

## Sourcing Find/Replace Specs from a Table or Query

This feature is available in registered versions only. You can source-in multiple Find/Replace specifications from a table (or query) that you have created. The table (or query) must have at least the following 3 fields (data types are in parentheses): FindText (text), ReplaceText (text), and WholeWord (Yes/No); other fields are ignored. In the "Find" box enter: "\*\*\*\*TABLE:MyTable". Then set your search options on the Find and Replace Form and press the Find button. The Find/Replace specs will be pulled from table "MyTable". "MyTable" could also be the name of a query or an actual SQL select statement (e.g. "\*\*\*\*TABLE:SELECT \* FROM mytable WHERE batch = 5").

**Sourcing Find/Replace Specs from a file:** You can also source Find/Replace specs from a file (via a query). Create a comma separated file where the first line is:

"FindText","ReplaceText","WholeWord"

Subsequent lines should contain your specs (use 0 for no whole word search and -1 to indicate a whole word search), for example:

```
"MyOldFieldName","MyNewFieldName",-1  
"AnotherOldFieldName","AnotherNewFieldName",0
```

Assuming you named the file "FindSpec.txt" and stored it on server "\\MyServer" in the directory "Data" you would enter the following in the Find Box to tell find and Replace to get the Find specs from there:

```
***TABLE:SELECT * FROM [findspec#txt] IN ""  
[Text;FMT=Delimited;HDR=Yes;DATABASE=\\MyServer\Data;TABLE=findspec#txt];
```

Or, if the file is c:\MyFiles\FindSpec.txt use the following

```
***TABLE:SELECT * FROM [findspec#txt] IN ""  
[Text;FMT=Delimited;HDR=Yes;DATABASE=c:\MyFiles;TABLE=findspec#txt];
```

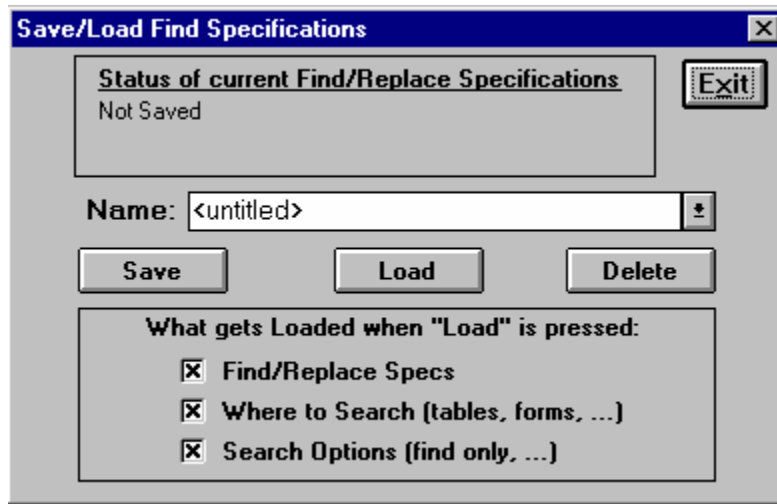
## **Save/Load Find and Replace Specs**

[Save/Load Find/Replace Specs](#)

# Save/Load Find Specs

This feature is available in registered versions only.

Click the Save/Load button on the main Find and Replace Form and this form appears.



## **To Save**

1 Enter a name to identify this set of Find and Replace Specifications in the Name combo-box. To overwrite an existing saved set, select the appropriate name from the drop down combo box.

2 You can select options of what gets loaded when the load button is pressed if you want. This preference will be saved, but all elements will be saved regardless of the setting.

3 Click Save

## **To Load**

1 Select the name of the Saved Find and Replace Specifications from the drop-down combo box.

2 Select the options of what should be loaded. The "Find/Replace Specs" populate the Find, Replace, and Whole Word settings. "Where to Search" will load the Search In (tables, queries, forms,...) and Document Name Like settings. "Search Options" loads all other options (Form/Report options, Case Sensitive, Find Only, Log, Replace without asking,...) and restores the appropriate user-specified properties if that option is applicable.

## **To Delete**

1 Select the name of the Saved Find and Replace Specifications from the drop-down combo box.

2 Click Delete.

## **Notes**

If the Set Property Wizard form is open when you save/load Find and Replace specifications the settings for this form will also be saved/loaded.

[How to configure where Find and Replace saves these specifications](#)

# Options/Preferences

On the main Find and Replace form click the "Options" button. This form will pop up.

## ***Database to store saved Find Specifications in***

You can save your find specifications to a table and later restore them via the load function. Find specifications will always be stored in a table called `_FindSpecs_FindAndReplace`. But you can direct Find and Replace to put this table in a database of your choosing. If you leave this blank, Find and Replace will store this table in the database you are searching. Entering a specific database is desirable if you want to use the same Find-specs with different databases. Also, if you want to share your Find-specs with multiple people you can point to an mdb shared by all.

## ***Database to store Log Tables in***

You can specify a separate mdb to store your log tables in. When stored in a separate database the log tables for each database searched will be named uniquely so as not to mix the logged results. If you leave this blank, Find and Replace will store this table in the database you are searching.

## ***Linked/Attached Table Options***

These options are only available to registered users.

**Allow linked Access source tables to be modified** - If this option is not checked (the default) Find and Replace will Find matches in the linked table, but will not allow modifications to the source table (you would have to open the source database and do your search in it). If you check this option, Find and Replace will modify the source tables (in the source database) of linked tables provided they are Access tables. The advantage of checking this option is that you don't have to open the source database to make changes to the tables. This works well when you have one front-end database file (with forms, code, reports,...) that links to a tables-only database file. However, if you have objects other than tables in the source database (such as queries or forms) that reference these tables this is not a good idea since they will not be searched and modified. Also, if you have multiple mdb's that reference the source mdb tables these will need to be searched separately. There is one additional advantage of enabling this option. When enabled, table searches will be faster.

**For linked Access tables only search source tables** - If this option is checked, when Find and Replace encounters a linked Access table it will only search the source table (in the source database). It will not search any of the local properties of the link table other than the table Name property. This speeds up searches of attached tables dramatically. See the next paragraph for a description of the local properties that are not searched.

Synchronize linked table properties with source table - This option can only be selected when you have also selected the "Allow linked Access source tables to be modified" option. When selected, the few local properties (table Description, table Filter, table OrderBy, field Caption, field Description, field Format, field InputMask, field RowSource, and field RowType) of the link table are compared with the source table and if different you are prompted to update them. Even if you selected Replace without asking, you will be prompted for these changes, but you can select the Yes to All option in the Replace dialog and further occurrences will be replaced without asking. Selecting the Yes to All option in the Replace dialog for a Synchronize type replacement only applies to other Synchronize type replacements.

This function is especially useful for updating the Description and Caption properties of fields since updating them in the source table will not update them in the local link table (but they will get updated if you reattach the table). And when you are designing forms it is nice to pull a field from a table and have the proper caption.

***Other options - Enable Beta Features***

[See Beta Test Features](#)

# Beta Test Features

From time to time, new features are added to Find and Replace that are considered to be in 'Beta test'. These features are not available to unregistered users. Registered users may enable the beta test features by checking the "Enable features in Beta Test" option in the Options/Preferences screen. The Beta period will expire at some time; when this happens this won't give you access anymore. If you load a different version of Find and Replace you will need to re-enable the beta features option.

## ***Features currently in Beta Test:***

Module Variable Report

Re-Link Table Wizard

Change Field Type Wizard

Cross-Reference Dependencies Report

## Module Variable Report

Note: The module variable report is not an officially supported feature of Find and Replace. (but please report any bugs anyway)

The module variable report scans a specified module and reports on the usage of variables. It is an effective way to detect declared variables that are not used. When you close the report you are given the option of saving the results to a table.

## Re-Link Table Wizard

Note: The Re-Link Table Wizard is not an officially supported feature of Find and Replace. (but please report any bugs anyway). You will need to enable features in Beta test (see Options) to use this. Click on the "Other" button on the main Find and Replace form to access this.

Relinks tables allowing you to change the connect string. Preserves local indexes (like when views are attached) which the Access Linked Table Manager does not.

For each unique connection string you will be asked what changes you want to make. Every time it sees the same connection string it will make the changes you specified. If you don't want to change the connection string but still want to reattach just click OK. If you do not want to reattach click skip (all subsequent matches with that connection string will be skipped). Abort cancels the reattachment process.

### ***ODBC Table Attachments Form***

On the relink table wizard form in the upper right corner is a link to an ODBC Table Attachments wizard. This allows you to enter a DSN and attach all tables based on a Like specification. It also gives you control over naming prefix and suffix. You can also just generate a list of tables. In the Object Name Like box the "\*\*\*\*TABLE: Select mytablename from myodbctables" type syntax works (just like in find specs).

# Change Field Type Wizard

Note: The Change Field Type Wizard is not an officially supported feature of Find and Replace (but please report any bugs). You will need to enable features in Beta test (see Options) to use this. Click on the "Other" button on the main Find and Replace form to access this.

**Change Field Type Wizard**

**WARNING**  
If the field type change encounters an error part way through the process the database will be left without the relationships (that relate to this field) and without the indexes on the table in which the error occurred. For this reason before you do a Change Field Type you should have a backup copy of your mdb that you can revert back to if this operation fails.

Table:

Field:

Existing Type:  New Type:

Existing Length:  New Len:

Conversion Format String:  (optional)

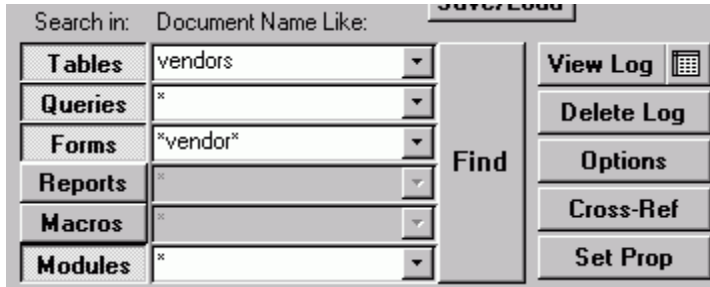
Copyright 2001, Rick Fisher Consulting [Beta Version - Use at your own risk](#)

Allows you to change a table field type where relationships exist. Traces the relationships and changes the field type in related tables. Works for Access tables only.

# Specifying Where To Search

Choose the containers in which you want to search (Tables, Queries, Forms, Reports, Macros, or Modules); push the appropriate toggle buttons to select any combination of these. If you want to search only documents with a certain name enter that in the "Document Names Like" box next to the desired object type toggle button. Note that wildcards can be used. If your object name has a wildcard character in it you cannot just specify the object name; you must enclose the wildcard character in brackets, [], so that the character is not interpreted as a wildcard (e.g. if the table name is Customer# you would specify this as Customer[#]).

Push the "Find" button to start the search.



## **Enhanced Document Name Like specs for Registered Versions**

Registered users may also enter a more complex set of criteria in the Document Name Like box using AND, OR, NOT, and parentheses by preceding the spec with an equal sign. In this case enclose each like spec in quotes ("").

Example: ="frm" and not ("\*invent\*" or "\*purch\*")

This will select all documents starting with "frm" that do not contain "invent" or "purch". If you enter an improperly constructed expression there will be no warning and the result (while predictable) will probably not be what you desire. (If you need to put a quote in your like spec double it up, for example: ="my ""quotable"" table").

This complex spec capability also applies to the other forms on which you can enter a Document Name Like spec (e.g. the Set Property Wizard form, the Rename Control form, the Cross-Reference form). See below for an advanced variant of these specs.

## **Document Selection Form**

If you double-click in a Document Name Like box a pop up form will display that allows you to select any number of documents from a list of all your documents. When the form first opens, it pre-selects any documents that would be selected by the current Document Name Like entry (this is also a useful way to check that any spec you have constructed yourself will select the documents you desire). After you make any changes in selection, you can click OK and it will then build an enhanced Document Name Like spec to accomplish your selection. It also properly takes care of the situation where a name contains a wildcard character (like "#") by properly enclosing the character in brackets (see above). You can also click cancel to abort any changes and leave the Document Name Like entry as it was before.

**A more advanced variant of the Enhanced Document Name Like Specs** allows you to do much more complicated things, like base selection on the values of forms' properties, and even limit the search to certain controls based on associated properties. (Note: there has not been a tremendous amount of testing of this feature so it should be considered in Beta test.) To evaluate an expression in an Enhanced Document Name Like Spec enclose the expression to be evaluated inside of vertical bar characters ("|"). The expression should follow VB syntax (you can also call any of your own functions you wish to) and should evaluate to true or false. In addition, within this expression you can use the following parameters which will get replaced with the appropriate object reference at the time the evaluation is made: %frm% (for form), %rpt% (for report), %tbl% (for table, or more

accurately tabledef), %qry% (for query or querydef), %ctl% (for control within a form or report), %ctlType% (returns the type of the control as text, e.g. "combobox", "textbox", ...), %fld% (for field within a table), %action% (for action name in a macro), %label% (for the "macro name" column within a macro).

To summarize: An Enhanced Document Name Like Spec begins with an equals sign. AND, OR, NOT, and parentheses are used to connect the criteria in a logical statement. Criteria can be strings to be compared to the object/document name with the Like statement, or expressions to be evaluated. Strings to be compared to the document name are enclosed in quotes and expressions are enclosed in vertical bars.

Some examples follow to illustrate the usage.

Example: ="frm\*" and |%frm%.recordsource like "\*\*inventory\*\*"|

This will select all forms that start with "frm" and where the form recordsource contains "inventory"

Example: =|%frm%("mycontrol").name="mycontrol"|

This will select all forms that contain a control called "mycontrol"

Example: =|%qry%.connect like "ODBC\*"

This will select all passthrough queries (where CONNECT string starts with "ODBC")

Example: =|%ctltype%="combobox"| and |%ctl%.columncount=2|

This will select only comboboxes with a column count of 2 on all forms.

Note 1: If the expression cannot be evaluated it will be treated as false. Remember that there are some properties (non DAO properties such as the description property and any user-defined properties) that when blank do not exist so the expression will fail generating a false result. An example is the expression:

=|%tbl%.description=""|. If the description is blank, the description property does not exist so the expression generates a false result instead of the true you might expect. However, if you rephrase the expression like this:

=NOT |%tbl%.description<>""|

it will work as you wish. When the description is blank the expression fails and generates a false which is what it we want it to generate since the NOT operator will turn this into a true.

Note 2: When you use %ctl%, %ctltype%, or %fld% you will not be warned about improper syntax or evaluation errors. For expressions without these parameters, you will receive evaluation error messages, and after 5 error messages you have the option of turning off further messages (sometimes error messages are expected, like when you reference a property that may not exist for some objects).

# Change Log

The change log is a table that contains a complete record of items found and any changes made. Errors, Find/Replace Specifications, and Report/Form search options will also be logged to the log table (registered copies only). Logging is enabled when the "Log Finds/Changes" option on the Find and Replace form is selected. By default, the log table is stored in the database you are searching and is created when needed. The name of the primary log table is "\_LOG\_FindAndReplace". A second log table, \_LOG\_FindAndReplace\_xref, is used in the cross-reference feature.

To view the log report in report format click on the "View Log" button on the main Find and Replace form. Alternatively you can click the button just to the right of the "View Log" button to view the log in datasheet format. In the datasheet format you can double click on an item to open the object in design view.

To delete the Log tables click on the "Delete Log" button. You may also delete the tables manually if you want.

Optionally you can specify that the log tables should be stored in a separate database (See Options / Preferences). When stored in a separate database the log tables for each database searched will be named uniquely so as not to mix the logged results.

Note: You can also use the Cross-reference report to view the last Find/Replace session in the log. After any search with logging enabled, you can go to the cross-reference form, and click on the "Report" button (don't click on the "Generate" button). This will give you a report, in the cross-reference style, of the last search you did.

## ***Log Report Description***

The log report is first sorted by Session Time Stamp. The Session Time Stamp is the Date/Time that a given Find/Replace operation was initiated. The most recent Find session is listed first.

Within a session there are up to 4 major sections. The first section lists any error messages if any. The second section is the "Find/Replace Text Specifications" for this search. In this section the column labeled "Replaced?" actually has a different meaning; if a "W" is in this column it means that Whole Word matching is specified for this Find/Replace spec. The third section lists what items you were searching (e.g. Forms Like "\*", Reports Like "\*", etc.) and also any form/report options. The fourth and final section lists all the found items. Only items found are listed. This section is sorted by object type (in order Tables, Queries, Forms, Reports, Macros, Modules, CommandBars) and then object name. An "N" in the Replaced column means no replace was done; a "Y" means the replace was successful.

# Cross-Reference Report

Note: This feature is available to registered users only.

From the main form, press the "Cross-Ref" button. The following form comes up:

**Generate Cross Reference Listing** [Close]

**A. Generate Cross-reference for**

☐ **Tables** For performance reasons, it is suggested only one of these be checked at a time.

☐ **Queries**

☐ **Forms**

☐ **Reports**

☐ **Macros**

☐ **Module Functions (non-CBF)**

☐ **Fields from Table:** [dropdown]

**B. Search for References in**

☐ **Tables** Like: \*

☒ **Queries** Like: \*

☒ **Forms** Like: \*

☒ **Reports** Like: \*

☒ **Macros** Like: \*

☒ **Modules** Like: \*

**1. Generate**

☒ **Ignore matches in Name & Description properties**

**2. Report**

**Report Style** [Where found]

☒ **List property where found**

☐ **List value of property**

☐ **Only list unreferenced items**

**Module Variable Report**

A cross-reference listing is a report that lists all references to your objects. For example, to generate a cross-reference listing for your tables in order to see where they are referenced), check the Tables box on the left hand side. If you want to see all references to those tables in queries, forms, reports, macros and modules check all of those boxes on the right. To see references for fields in a table check that option and then specify the table in the box to the right (you can use wildcards like "\*" to specify multiple tables). Then, click the generate button. This will generate the cross-reference data (stored in the log table). If the "Ignore matches in Name & Description properties" option is enabled (default) then Find and Replace will not search for references in name & description type properties since matches in these would not be true references of an object. The properties it ignores when this option is selected are: Name, Description, Caption, ValidationText, StatusBarText, and ControlTipText.

Then, click the Report button to see the cross-reference report. The report always uses the data from the last Find and Replace performed so you can do the report over and over again as long as you don't do intervening searches.

The report has three options. If none are checked, you get a report listing the objects you are searching for references to (the target objects), and for each of those, a list of objects that contain a reference to it (the target object). If the first option is checked (the default) the properties the reference was found in are also listed. The second option will list the value of the properties the reference was found in. The third option will list only items where no references were found.

Note: for instructions on how to generate a list of objects in your database via the cross-reference function see the FAQ section.

# Form/Report Options

These options control what is searched in forms and reports.



Recordsource, RowSource, and SourceObject, Filter, OrderBy properties.  
(These are properties with object names and/or SQL Statements)

Control Name & Event Procedure Names. When this option is selected, control names will be searched. If a change is made to a control name, the names of any associated event procedures (in CBF ) will be changed appropriately so that they remain properly associated with the control.

ControlSource, LinkChildFields, and LinkMasterFields properties, and Report Sorting/Grouping field names. (These are properties containing field/control names).

Event Properties.

Forms: AfterDelConfirm, AfterInsert, AfterUpdate, BeforeDelConfirm, BeforeInsert, BeforeUpdate, OnActivate, OnApplyfilter, OnChange, OnClick, OnClose, OnCurrent, OnDblClick, OnDeactivate, OnDelete, OnDirty, OnEnter, OnError, OnExit, OnFilter, OnGotFocus, OnKeyDown, OnKeyPress, OnKeyUp, OnLoad, OnLostFocus, OnMouseDown, OnMouseMove, OnMouseUp, OnNotInList, OnOpen, OnResize, OnTimer, OnUnload, OnUpdated. Access 2002 and up only: AfterFinalRender, AfterLayout, AfterRender, BeforeQuery, BeforeRender, BeforeScreenTip, CommandBeforeExecute, CommandChecked, CommandEnabled, CommandExecute, DataChange, DataSetChange, MouseWheel, OnConnect, OnDisconnect, OnUndo, PivotTableChange, Query, SelectionChange, ViewChange

Reports: OnActivate, OnClose, OnDeactivate, OnError, OnFormat, OnNoData, OnOpen, OnPrint, OnRetreat

Other Properties: DefaultValue, Format, InputMask, MenuBar, RowSourceType, ShortcutMenuBar, Tag, ToolBar, ValidationRule, FormatCondition.expression1, FormatCondition.expression2

Code behind form/report (CBF).

Caption, ControlTipText, StatusBarText, ValidationText, Description Properties. (These are display text or documentation text items)

Form or Report Name

Fast Search (and the 'Configure' button). The Fast Search option is not available in Access 2000 but is available in Access 2002 and up. Fast search works by maintaining a cache of information about forms and reports to speed up Form and Report searches (dramatically in some cases). This option is further configured by pressing the Configure button. Note: This feature is available to registered users only.

Also, see the " Search user-specified properties " option.

## Other Search Options

- ☐ **Find Only, No Replace**
- ☐ **Log Finds/Changes**
- ☐ **Replace without asking**
- ☐ **Case Sensitive Search**
- ☐ **Search user-specified properties**

**Find Only, No Replace:** If you want Find and Replace to only find, not replace, check the "Find only, No Replace" box.

**Log Finds/Changes:** If you want all finds and changes to be logged to a log table, check the "Log Finds/Changes" box. This log may be subsequently viewed by clicking the "View Log" button on the main form. The following log features apply to registered copies only: Errors, Find/Replace Specifications, and Report/Form search options will also be logged to the log table. Note: If 'Replace without asking' is also selected, errors will be reported in the log, not in individual dialog boxes (however, a message box at the completion of entire search will indicate that errors have occurred and can be viewed in the log).

**Replace without asking:** The "Replace without asking" box may be checked if you want all found occurrences to be replaced without any prompting if it is OK (Suggestions if you select this: turn on logging and have a backup of your mdb prior to the change).

**Find without asking:** When the "Find Only" option is checked the "Replace without asking" option becomes "Find without asking". This option is only useful if you turn on logging. Then the result of the Find may be viewed via the log report.

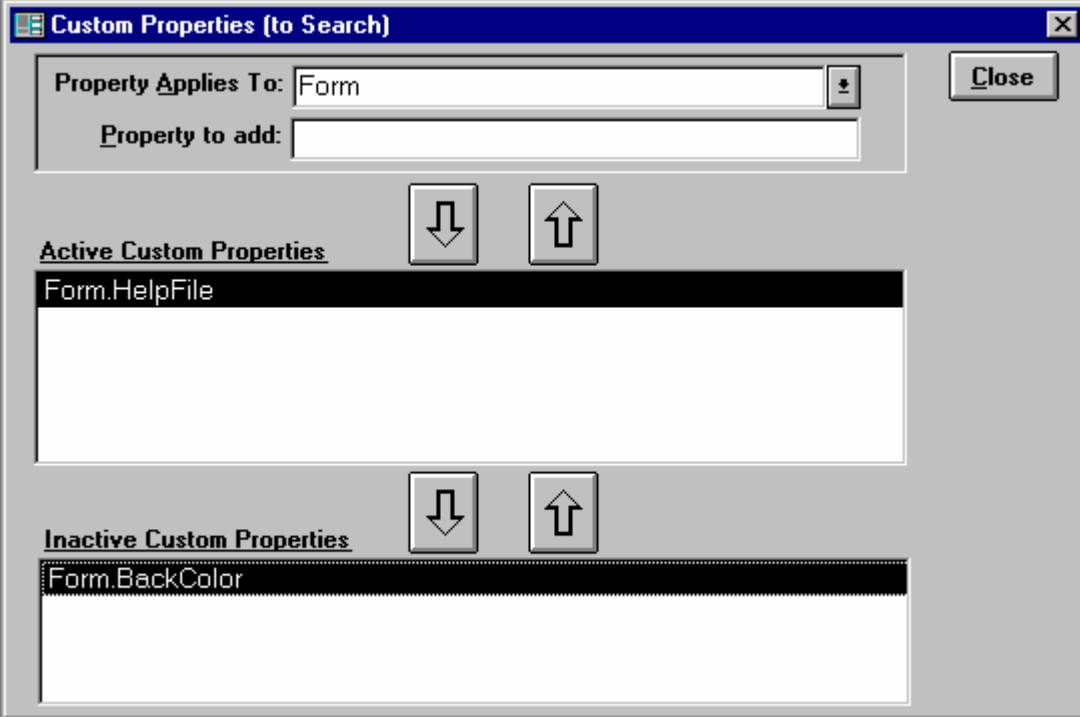
**Case Sensitive Search:** Select this option if you want the search to require an exact match, including the case (upper or lower) of the letters.

**Search user specified properties:** This feature is available to registered users only.

# Custom Property Search

(Search user-specified properties)

Note: This feature is available to registered users only.



When you check the "Search user-specified properties" box on the main Find and Replace Form, this form is displayed. Any properties listed under "Active Custom Properties" will be searched by Find and Replace. The "Inactive Custom Properties" section is just a convenient place to store custom properties you do not want to search, yet do not want to delete (so you don't have to retype them the next time you want them).

To add new custom properties, select what object the property applies to, then enter the Property in the "Property to Add" box. Then click the arrow pointing down to the Active Custom Properties List. To remove a custom property, select it and click the arrow pointing up away from the Active Custom Properties List. To merely inactivate (disable the search for) a custom property, select it and click the arrow pointing down to the Inactive Custom Properties List. To re-enable a property, select it from the inactive list and click the arrow point up towards the Active Custom Properties List.

After you have finished, click the close button to return to the main Find and Replace Form.

Note: if during the search, the custom property is not valid for a searched object, the property is simply skipped for this object.

Also, please see ["Access quirks when searching certain properties"](#)

## ***The "Property Applies To" Options***

Form - The property applies to the form, i.e. Form.MyProperty

FormSection - The property applies to each section (header, detail, ...) of the form. i.e. form.section(x).myproperty

FormControl - The property applies to the controls on a form.

Report, ReportSection, ReportControl - Same concept as for Forms.

Table - The property applies to the table definition, i.e. TableDef.MyProperty

TableField - The property applies to the fields in a table definition, i.e. TableDef.fields(x).MyProperty

TableFieldValues - This allows you to actually search the data within a table (as opposed to the data definition). When you select this, the property you enter is not actually a property. It will specify what table and what fields within the table to search, and optionally what additional fields to display when a match is found. The syntax of the property definition is:

TableName.SearchField1[ SearchField2[...]] [.DisplayField1[ DisplayField2[...]]]

The [] indicate optional arguments. Note that the ` character is ASCII 96, not a ' which is ASCII 39. Some examples of values you could enter as the property (when the "Property Applies To" selection is "TableFieldValues") follow:

MyTable.MySearchField

this searches all records in MyTable, looking at the data in the field MySearchField)

MyTable.MyField1`MyField2`MyField3

this searches all records in MyTable, looking in the fields MyField1, MyField2, and MyField3

MyTable.MyField1`MyField2.MyPrimaryKey

this searches all records in MyTable, looking in the fields MyField1 and MyField2, and when matches are found MyPrimaryKey will also be displayed (just for information to help you identify the record in which the match was found).

Note: The wildcard character \* is allowed in the TableName and SearchField specifications.

Query, QueryField, QueryFieldValue - Same concept as for Tables (except the wildcard character \* is not allowed in QueryName or SearchField specifications)

Relation - The property applies to a relation object. The collection of relation objects are all the relationships you have specified in the Access relationships window. Probably the only property you might want to specify is the Name property (note that changing the name of a relation will cause it to get dropped and recreated). But since relation names are not displayed in the user interface it is not critical to change them (when for instance the table name changes). Relations get searched when you search tables (but only if you have specified a relation property to be searched in this option).

Macro - The property applies to a macro or lines of a macro. This is only useful in conjunction with the "Exclusively" option to limit what parts of a macro will be searched.

Database - Property applies to the database object. Database properties are searched when "Macros" are selected to be searched in. The following database properties are searched by default (without specifying custom properties): AppTitle, StartupForm, StartupMenuBar, StartupShortcutMenuBar.

### ***The "Exclusively" option***



After you close the Custom properties form you will notice that a new option has been added next to Search user-specified properties option. This option, Exclusively, tells Find and Replace to search user-specified properties exclusively (no other properties will be searched).

## Access quirks to be aware of

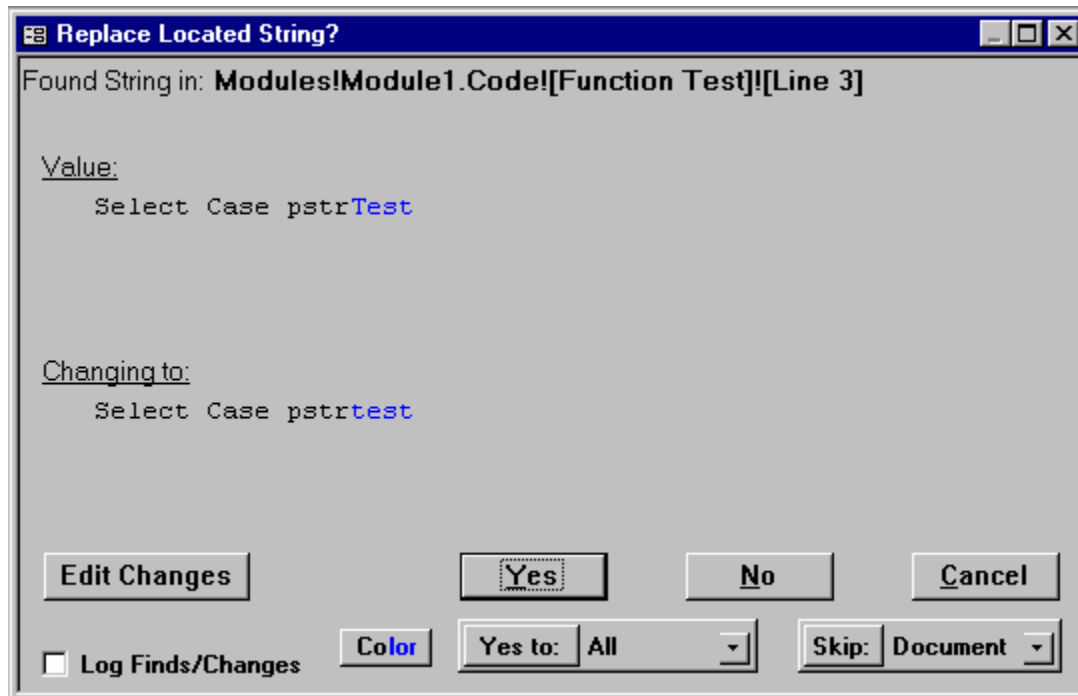
If you search properties whose values are True or False (boolean) you must search for the text "True" or "False", not 0 or -1. However you should set the values to either 0 or -1

For Non-English versions of Access:

You should beware that Access stores some properties internally as the English equivalent even though you have a foreign language version. For example the format "Currency" is stored as "Currency" even though you have the German version and Access displays "Währung" in the property sheet; so you must search for Currency). This also applies to the decimal separator (Access stores a "." even if you have specified a ",", and it displays a ",") and the thousands separator.

# When a match is found

Assuming you haven't checked the "Replace without asking" option, when a match is found a dialog box is displayed.



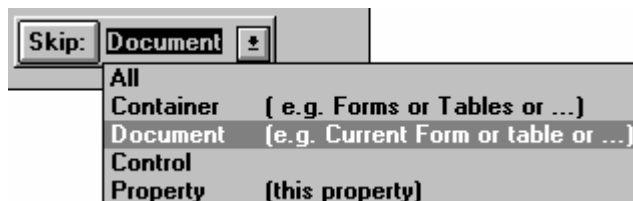
The object and property in which the match was found is indicated at the top of the box. Just underneath that, under the label "Value", the current value of the property is displayed. The line after that, "Changing to:", shows what the value will be changed to. At the bottom are six buttons: "Edit Changes", "Yes", "No", "Cancel", "Yes To:", and "Skip:". You can select "Yes" to do the replacement, "No" to proceed to the next match, or "Cancel" to stop the entire process. The other buttons are described below. Also note the "Log Finds/Changes" checkbox; if you forgot to turn on the change log from the main form when you started the find, you can do it here.

## Color button

Allows you to change the color used to highlight the found text.

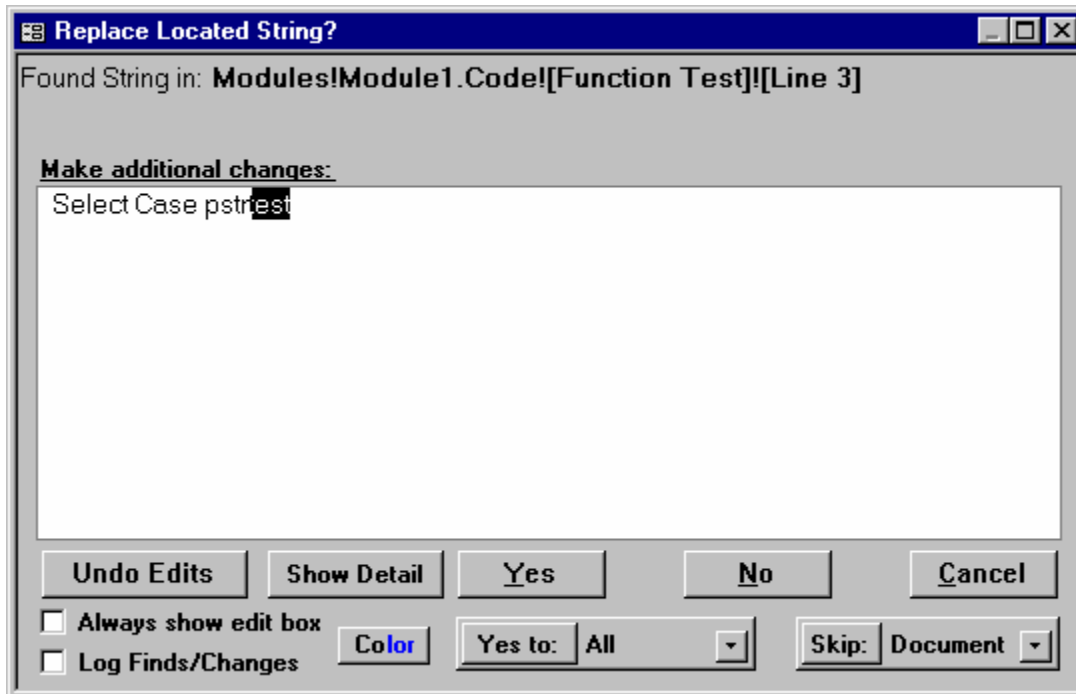
## "Yes To:" and "Skip:" buttons

The "Yes To:" and "Skip:" buttons depend on the selection in the combo boxes adjacent to the buttons. "Yes to:" makes the current change and will make all further changes without asking for the duration specified in the adjacent combo box: "All" means for the rest of the session, "Container" means until the next container (if selected while in Forms then Yes To applies to all forms), Document means until the next document (if selected in Form Form1 then Yes To applies to Form Form1 only), "Control" means Yes To for all properties of the current control, "Property" means Yes To all occurrences within that property. The "Skip:" button is like answering No for the duration specified in the adjacent combo box.

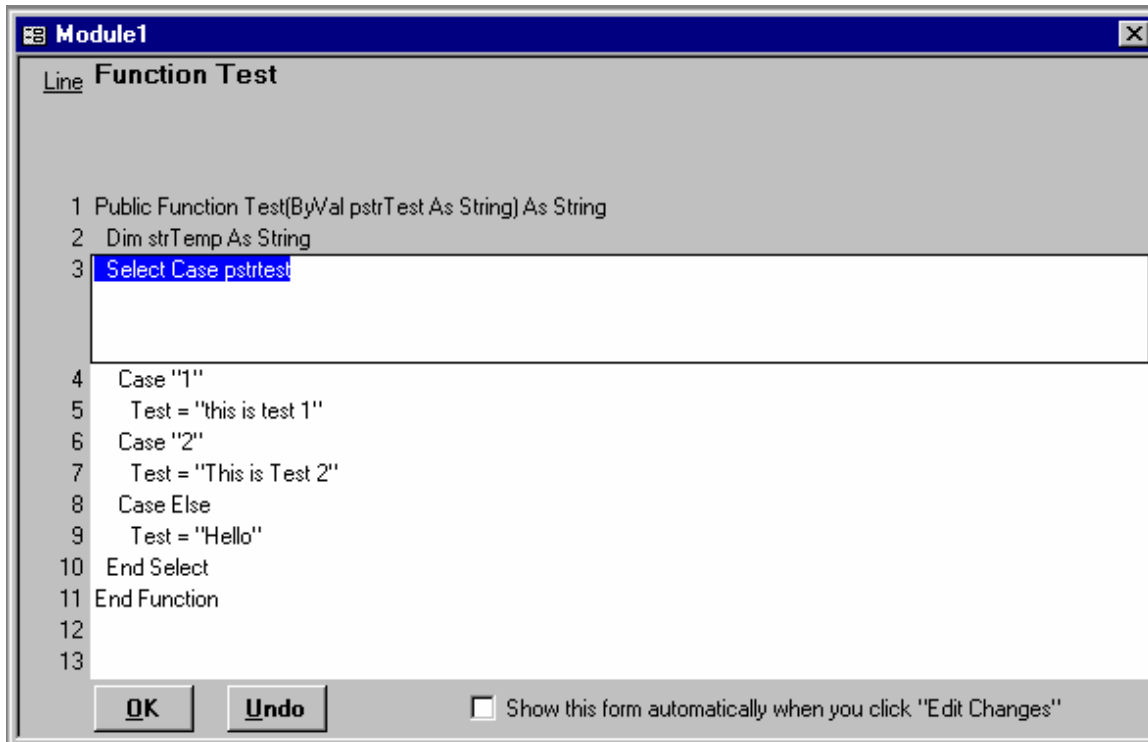


## "Edit Changes" Button

Edit Changes allows you to make additional changes. When you press this button, an edit box appears allowing you to freely edit the property value as you wish. This is very useful when you wish to locate something, but the changes may be different from case to case.



The Show Detail button only appears for code (Modules/CBF) changes. When this is clicked, a form pops up that shows the line of code the string was found in the context of the surrounding lines of code. Also, lines of code following the one in which the string has been found can also be edited.



# What Find and Replace Searches

Also, see the " Search user-specified properties " option.

## **Tables:**

Local Tables - Table Name, Field Names, DefaultValue, ValidationRule and ValidationText, Caption, Description, Index Names, RowSource, RowSourceText, Filter, OrderBy.

Linked Tables - Table Name, Caption, Description, RowSource, RowSourceText, Filter, OrderBy, Connect strings (if the connect string is changed the link will be refreshed), TableSourceName (if changed the link will be refreshed). The following are searched but replace is disallowed unless the "allow source tables to be modified" option is selected (see options/preferences): Field Names, Index Names, DefaultValue, ValidationRule, ValidationText.

ADP Projects - Table name, field names, constraint names, index names, Description, Filter, LinkChildFields, LinkMasterFields, SubDatasheetName, column descriptions, column captions, constraint validation text.

Note: Registered users can custom-define additional properties to be searched. See Custom Property Search.

## **Queries:**

The query name, the query SQL (which completely specifies the query), Description, OrderBy (affects datasheet grid display only), and Filter. Note: Registered users can custom-define additional properties to be searched (see Custom Property Search)

For adp projects queries include Views, Stored Procedures, In-Line Functions, Scalar Functions, and Table Functions. Items searched include the query name, the SQL query text, Description, Filter, LinkChildFields, LinkMasterFields, SubDatasheetName, column descriptions, column captions, constraint validation text.

## **Forms:**

Properties that can specify macros, functions, field names, control names, or table/query names. Other properties: Caption, Tag, Validation Text. Other: form names, code-behind-forms. Note: Numeric properties are not searched. See Form and Report Options for a complete list. Note: Registered users can custom-define additional properties to be searched (see Custom Property Search)

## **Reports:**

Properties that can specify macros, functions, field names, control names, or table/query names. Other properties: Caption, Tag. Other: report names, code-behind-reports. See Form and Report Options for a complete list. Note: Registered users can custom-define additional properties to be searched (see Custom Property Search)

## **Macros:**

Macro Names, Macro Labels, Conditions, Description property, and Parameters to Macro Actions. The Macro Action is searched but cannot be changed. With Access 2007 and 2010 macros can be searched, but no changes can be made. The database properties StartupForm, StartupMenuBar, and StartupShortcutMenuBar. See also "CommandBars" below.

## **Modules:**

Everything. (including the description property of the module)

## **CommandBars:**

CommandBars/Toolbars will be searched when "Macros" is selected (registered version only).

## Status/Progress Indication



The object that is being searched is displayed in the status window that pops up in the upper left corner of the screen. Note also the "Abort" button. Pressing this button will abort the search (this allows you to cancel a search without having to wait for a match). You may need to click the abort button a few times for it to take effect since during searches there are periods of time when events (such as clicks) are not processed.

Also, at the bottom of the Access window, in the status bar, a bar graph is displayed indicating the search progress within a given container.



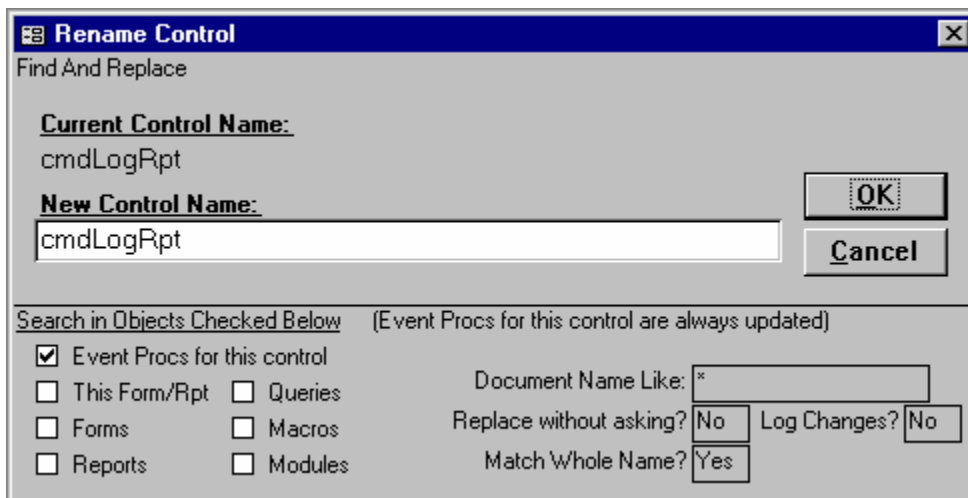
## Control Name Change Builder

The control name change builder facilitates changing control names while you are designing a report or form. Normally, when you change the name of a control all CBF event procedures get "lost". (They are not really lost, they still exist under the old name but they are no longer associated with the control). Also, any references to that control elsewhere will need to be changed.

The control name change builder solves this by invoking a Find And Replace function that renames the event procedures properly, and optionally searches that form and any other object specified for references to that name.

To access the control name change builder: Open Form or report in design mode. Open properties display. Select the control you want to change the name of. Select the control name item in the properties box. Click the ... button to the right of this entry to invoke the control name change builder.

Note: A common error is to change the control name and then click on the builder button. This will not work since the control name gets changed before the builder is invoked. You must click on the builder button first!



Type the new name in the "New Control Name:" box. The default options for the name change are 1) all Event procedure names will get changed to reflect the new control name, and 2) the name will be searched for in this form (including CBF). Additional options may be checked as desired. The "Document Name Like" box applies to the Forms, Reports, Queries, Macros, and Modules options (there is not a separate Document Name Like box for each of these options); wildcards are permitted.

Double clicking on the Yes/No boxes toggles that option.

# Set Control Property Wizard

**Find and Replace - Set Control Property**

Find And Replace - Rick Fisher Consulting

Forms Like: \*  ☒ Forms ☐ Reports

Controls where property:   
 has a value Like  ☐ Case Sensitive

WHERE:  ?

Controls of the following types

<input type="checkbox"/> Label	<input type="checkbox"/> OptionGroup	<input type="checkbox"/> ObjectFrame	<input type="checkbox"/> Sections: <input type="text"/>
<input type="checkbox"/> TextBox	<input type="checkbox"/> OptionButton	<input type="checkbox"/> Form	<input type="checkbox"/> CustomControl
<input type="checkbox"/> ListBox	<input type="checkbox"/> ToggleButton	<input type="checkbox"/> SubForm	<input type="checkbox"/> TabControl
<input type="checkbox"/> ComboBox	<input type="checkbox"/> CommandButton	<input type="checkbox"/> Rectangle	<input type="checkbox"/> Page
<input type="checkbox"/> CheckBox	<input type="checkbox"/> BoundObjectFrame	<input type="checkbox"/> Line	<input type="checkbox"/> Image
		<input type="checkbox"/> PageBreak	

☐ Only update if control is updateable (not locked or calculated control source)  
☐ Only update if control is not updateable (locked or calculated control source)  
☐ Replace all entries without asking ☐ Log Changes ☐ Find Only  
☐ Don't ask when existing entry =   
☐ New Value is a function/expression to be evaluated ?

Name of property to set:     
 New Value:

The Find and Replace "Set Control Property" wizard is a powerful way to set the values of specified properties of forms, reports and controls. You specify criteria to select what controls you are interested in, and then specify what property to change and what to change it to. The selection criteria can be complex; not only can you limit it to particular forms, control types and controls where properties match a specified value, but you can even specify a function or expression to be evaluated for each control (expression must evaluate to true to select controls). Even the value that you will set your selected property to can be an expression (a calculated value) that depends on for instance properties of the particular control or form.

1 Choose to search Forms or Reports by clicking the Forms or Reports options at the top of the form. Then select the forms you want to include in the Forms Like box (wildcards OK).

2 In the "Controls where Property" box you can enter a property name (e.g. Name, Tag, ControlSource,...) to be searched. Then in the "has a value Like" box enter the value you are searching for (wildcards can be used with the Like operator). Operators other than Like can be selected via the drop down arrow. Leave the property name blank if you don't wish to limit the search in this fashion.

3 In the "Where" box enter a function or expression to be evaluated (must evaluate to 0 for false and non-zero for true). The expression can reference the current control (or form) and it's properties via special syntax. Click on the ? button for sample syntax.

4 Select what types of controls you want to search. When selecting "sections" (e.g. header, footer, detail) there is a box next to the section option where you can enter the section numbers (use the numeric value for the sections as described in the Access help file: 0-detail, 1-Header, 2-footer, 3-PageHeader, 4-PageFooter, ...) separated by commas, or just enter an asterisk to indicate all sections.

5 Select various options (Replace without asking, Find Only, ...) if desired

6 Enter the name of the property you want to search for and set the value of in the Name of Property to Set box. Enter the New Value you wish to set the property to in the New Value Box. This can be

a function or expression if the New Value is a Function option is checked. When you check this box it will pop up a message box with example syntax.

7 Click on Go. You can use the log report to review Finds/Changes if you selected to Log Changes.

Also, please see ["Access quirks when searching certain properties"](#)

# Frequently Asked Questions (FAQ)

**1 I used the add-in manager to add Find and Replace but when I try to start it Access says it can't be found.**

See the "Installation" topic.

**2 I've already installed Find and Replace 9.0 but now I see there is an updated version on your web site (which I have downloaded). How do I install the update?**

See the "Installation" topic, step 2. You should not have to re-enter your registration information.

**3 Why doesn't my registration code from version 2, 7, or 8 work with this version?**

You need to upgrade your registration. Details are provided on the order form. To view the order form, install Find and Replace per the instructions in the help file, open the main Find and Replace form (Select the menu item Tools, then Add-ins, then Find and Replace), click on the about button in the upper left corner, and then click on order form.

**4 I have a table in which I store form names and other object names. Can Find and Replace also search the contents of this table?**

Yes (registered version only). See the topic "Custom Property Search".

**5 I have a table with existing field names and what I want to change them to. Can I get Find and Replace to get the Find/Replace Specs from this table rather than manually entering them?**

Yes (registered version only). See the topic "Sourcing Find/Replace Specs from a Table or Query"

**6 Instead of the regular log report I would like a report that looks more like the cross-reference report. Is this possible?**

After any search with logging enabled, you can go to the cross-reference form, and click on the "Report" button (don't click on the "Generate" button). This will give you a report, in the cross-reference style, of the last search you did.

**7 Is Find and Replace compatible with Access projects controlled by Visual Source Safe or other Source Control system compatible with Access 2000/2002/2003?**

Yes, with a fair amount of caution. Any object that Find and Replace modifies must be checked out by the user (or the changes won't stick). It would be prudent to check out everything in a database before using Find and Replace. At a minimum you must check out all objects that will be modified. When searching tables, queries, and macros you will not be prompted to check the item out, nor will you be warned that it is not checked out. Since the built-in SourceSafe control kicks in when a form or report is opened in design mode, you should get prompted for these. For a find-only type search you can prevent Access from asking you if you want to check out each form or report by placing the line "SourceSafe=Yes" under the [Options] section of the REPL9.INI file in your windows directory.

**8 Does Find and Replace 9 support different language versions of Access?**

Yes. It is language independent. However you should be aware that Access stores some properties internally as the English equivalent even though you have a foreign language version. For example the format "Currency" is stored as "Currency" even though you have the German version and Access displays "Währung" in the property sheet; so you must search for "Currency". This also applies to the decimal separator (Access stores a "." even if you have specified a ",", and it displays a ",") and the thousands separator. See the next question for information on character sets.

**9 Does Find and Replace work with extended character sets such as Japanese or Arabic?**

You will need to change the fonts that F&R uses for forms and reports. To do this put the following lines under the [Options] section in your repl9.ini file (the one located in the windows directory).

ReportFont=MS PGothic

FormFont=MS PGothic

DialogFont=MS Gothic

Note that the DialogFont entry must be a fixed font (non-proportional). The fonts listed here (MS PGothic and MS Gothic) work for Japanese, but you can specify any font you have installed that works with your character set.

**10 I changed the name of a table, query, or field from one without spaces (or special**

**characters) to one with spaces (or special characters) and encountered errors. What is wrong?**

When changing from a name that has no spaces to one which does (or a name with no special characters to one with special characters), some problems can occur. Since a reference to a name containing no spaces does not require brackets, your original reference to the name might not use brackets. Since the use of spaces in names (or special characters) requires surrounding brackets, a simple replace would not add the required brackets. This bracket anomaly is handled by Find and Replace automatically (i.e. it correctly adds brackets) for most references, however there are some instances that Find and Replace can not detect. If you want to ensure that all situations are handled properly you need to specify multiple find/replace pairs as described below. For example to change "MyName" to "My Name", specify the following Find/Replace pairs in the order shown (with the whole word option enabled):

Find: "[MyName]" ReplaceWith: "[My Name]"

Find: "MyName" ReplaceWith: "[My Name]"

**11 How do I search properties like HelpFile, ContextID, etc which are not included in any of the form search options?**

See Custom Property Search

**12 I want to search the contents of tables (the actual data records, not just the design elements); how do I do this?**

See Custom Property Search

**13 I have used the Access switchboard manager to create switchboard forms. How can I search and replace the text in those forms?**

The text for these is stored in the table "Switchboard Items". To search the table contents you need to specify the "Search user-specified properties" option and add a custom property of TableFieldValue.Switchboard Items.ItemText' Argument to the Active Custom Properties.

**14 Can I generate a list of objects in my database with Find and Replace?**

Yes (for registered versions) but it is not evident. First delete the log by clicking the Delete Log button (on the main form). Then go to the cross-reference screen, check all the object types under "Generate cross-reference for" that you want to build an inventory of. For example, if you want a list of all fields in all tables, click the "Fields from Table" option and put an asterisk ("\*") in the combo box next to it to specify all tables. Then uncheck all the object types under "Search for References in". Then click the "Generate" button. Close the cross-reference form and view the log (preferably by just opening the log table, \_LOG\_FindAndReplace, directly, but you could use the datasheet button next to the view log button also). Of course you could then copy the log contents to another table with a make table or append query, or just use copy and paste to a new table or to Excel.

**15 Can I get a list of all the values for a particular property on all my forms?**

Yes (registered versions only). For example, to get a list (in the log file) of Tag properties, enable Beta features as discussed in the "Beta Test Features" topic. Then open the Set Property Wizard (the Set Prop button on the main form), and enter Tag as the Name of Property to Set. Check all the control types you want to include. Then select Find Only and Log Changes and Find without Asking. Click Go. Then you can view the log report (or view the log table directly).

**16 I am searching for a numeric value (for example the backcolor property of form controls) and Find and Replace is not finding anything yet I know they are there. What is the problem?**

Generally Find and Replace does not search numeric properties unless you specify them in the Search User-defined Properties option.

**17 I am searching for a particular Format property value and Find and Replace doesn't find anything yet I know it is there. What is going on?**

If you are using a foreign language version of Access or you are using a decimal separator that is not "." or a thousands separator that is not ",", you need to know that Access converts your format to the U.S. equivalent and stores it this way. Thus Find and Replace sees the U.S. equivalent. For example the format "Currency" is stored as "Currency" even though you have the German version and Access displays "Währung" in the property sheet; so you must search for "Currency". This also applies to the decimal separator (Access stores a "." even if you have specified a "," and it displays a ",") and the thousands separator (Access stores a "," even if you have specified a "." and it displays a ".").

**18 I am searching for a particular boolean value (for example looking for all controls where the visible property is false) and it is not working.**

For boolean values you must search for "True" or "False" not -1 and 0. However when you set the values you can either specify True, False, -1, or 0. For foreign language versions of Access it may not be True or False but the equivalent in your language (try it and tell me what you find out).

**19 What happened to the Fast-Search (forms caching) option that was in Find and Replace 2.0, .0, and 8.0?**

Because of a bug in Access 2000 (whereby the LastUpdated property of Forms and Reports does not in fact reflect whether the objects have been updated) this feature has been disabled. However, the Fast-Search feature does work in Access 2002, 2003, 2007, 2010.

**20 Can I use Find and Replace to re-link (reattach) my tables?**

Yes. You can use the Relink Table Wizard (see beta features) or you can do the following. Select the "Search user-specified properties" option and add just the Table.connect property to active custom properties. Select the "Exclusively" option next to the "Search user-specified properties" option. Then enter a semicolon, ";", in both the Find box and the Replace With box. Select the Replace Without Asking option, choose Tables to search in, and click the Find button. Note that a semicolon is always present in connect strings which is why this causes all linked tables to be refreshed/reattached. If you want to change part of the connect string (like the datasource for example) you would specify that in the Find and Replace specs instead of just using a semicolon. When Find and Replace re-links tables it preserves any security and pseudo-indexes (unlike the linked table manager). This is true even if you change the SourceTableName (which requires a new attachment rather than just a refreshlink).

**21 Can Find and Replace search and modify Data Access Pages (web pages)?**

No.

**22 I'm getting an error 5 message upon startup, what's wrong?**

This has only been reported in conjunction with Windows 98. Rebooting the machine solves it.

**23 I'm getting "Error 2517 in Find and Replace procedure zFAR-FindInModule <my application name> can't find the procedure"**

If you have set a visual basic password you should open any module before running Find and Replace so that you can enter your password.

**24 How can I remove Find and Replace from my system?**

Close Access and then restart it. Open the replace9.mde file directly and click the uninstall button on the form that pops up. Then delete the replace9.mde and replace9.hlp files.

**25 How can I replace the spaces in all my field names with underscores?**

Rather than search for spaces you need to search for the entire field name (also use the whole word option when you do it) and change it:

e.g. Search for "My Field" and replace with "My\_Field"

You can generate a list of fields and what to change them to and source them into Find and Replace (see the topic Sourcing Find Specs from a table).

To generate a field list open the main Find and Replace form, then open the debug window (ctrl-G) and type:

```
MakeFieldChangeTable "*", "*", "MyFindSpecs", " _"
```

A table called MyFindSpecs will be created. The last parameter is a space followed by an underscore and directs the function to populate the ReplaceText field in the table by changing spaces to underscores. You can manually modify the table before sourcing it in.

**26 Help doesn't work. What's wrong?**

See step 5 under the installation topic.

**27 I lost my registration code. Can I get it from you again?**

Yes, E-mail me.

# Notes and Other Information

## Notes:

FIND AND REPLACE CAN BE A DANGEROUS TOOL. IF YOU'RE NOT SURE WHAT YOU'RE DOING, DON'T DO IT. Even if you think you know what you're doing, always have a backup copy of your database that is relatively up to date.

Relationships/Referential Integrity. When table names are changed the table will drop out of the relationships window. All relationships (and referential integrity) are preserved however. To get the table back into the relationship window (which is only for the benefit of viewing or changing the relationships) you need simply add the table back to your view (via Edit, Add Table).

For bug reports or suggestions contact: Rick Fisher

## Features only in Registered Version

The following features are only available to registered users (they are not available to unregistered users during the 30 day trial period).

Cross-Reference Report

Search user-defined properties (Custom Properties Option)

Sourcing Find/Replace Specifications from a table

Save/Load Find Specifications

More than 2 Find Specifications can be entered for simultaneous search

Enhanced Logging

Linked/Attached Table Options

Enhanced Document Name Like Spec

Module Variable Report

Set Control Property Wizard

CommandBars/Toolbars will be searched when Search in Macros selected

Features in Beta Test

# Programming Interface to Find and Replace 9.0

## *(how to Start Find and Replace and use it from your own code)*

Note: this interface is not officially supported and is subject to change. You are welcome to report problems with it, but there are no guarantees that it works or will ever work (how's that for a disclaimer?). The API functions are only available with the registered version.

### **Starting Find and Replace**

There are two ways to start Find and Replace. The first involves setting a reference to the Find and Replace mde and then calling the zFAR\_StartFindAndReplace function. To set a reference open any module, select from the menu Tools, References, and select Find and Replace 9. You can then call zFAR\_StartFindAndReplace to start Find and Replace. The disadvantage with this method is that you have to set a reference to Find and Replace in every mdb you want to do this in. There is an optional parameter you can pass in the zFAR\_StartFindAndReplace function to cause the Find and Replace form to open in hidden mode, e.g. call zFAR\_StartFindAndReplace(true).

The second method depends on the language version of Access you have, but does not require you to set a reference. To start Find and Replace with the English version of Access, do a sendkeys "{F11}%tif". This selects the database window (the F11 key; if you redefine this then select the database window in another fashion) and does an alt t (the tools menu option) and then "i" for the add-ins option and then "f" for Find and Replace (if you have another add-in with an f accelerator key this may not work).

### **The Find and Replace 9.0 User API**

The following are the functions available for use by you to configure and run Find and Replace from your program. Some functions are not available with unregistered copies.

#### **Forms!zfrmFAR\_FindReplace.DoAction "Load"**

Requires that the main Find and Replace form be open (see Starting Find and Replace above). Tells Find and Replace to open the Save/Load form so as to Load or Save Find Specs. Once the Load is issued, you can issue commands to the Save/Load form as described below

#### **Forms!zfrmFAR\_FindSpecs.LoadFindSpecs "<MySpecName>",<LoadOptions>**

Executes the Load from the Specs named <MySpecName> and closes the Save/Load Form. <LoadOptions> are: 1 for Load Find/Replace Specs, 2 for Where to Search, 4 for Search Options. Add these together to have a combination of them, e.g. 3 to Load Find/Replace Specs and Where To Search Specs, 7 for all options (can also just use -1 for all options).

#### **Forms!zfrmFAR\_FindSpecs.LoadFindSpecs**

**"<MySpecName>",<LoadOptions>,"LoadFrom",<DBPathName>",<TableName>"**

Executes the Load from the table specified by <DBPathName> (the path and filename of an mdb containing the table that contains the saved FindSpecs) and <TableName> (the name of the table containing the saved FindSpecs) and closes the Save/Load Form.

#### **Forms!zfrmFAR\_FindSpecs.LoadFindSpecs "<MySpecName>",<LoadOptions>,"Save"**

Saves the Find Specs to the name <MySpecName>

#### **Forms!zfrmFAR\_FindSpecs.LoadFindSpecs "<MySpecName>",<LoadOptions>,"Delete"**

Deletes the Find Specs named <MySpecName>

#### **Forms!zfrmFAR\_FindSpecs.LoadFindSpecs**

**"" ,0,"SetFindSpecTable",<DBPathName>",<TableName>"**

Sets the table where Find Specs are loaded from/stored to: <DBPathName> (the path and filename of an mdb containing the table that contains the saved FindSpecs) and <TableName> (the name of the table containing the saved FindSpecs). This only applies for so long as the Save/Load form remains open.

#### **Forms!zfrmFAR\_FindReplace.DoAction "SetControl",<ControlName>,<Value>**

Sets the values of various controls in the proper manner (so that any necessary event procedures fire). Controls of interest are:

Form and Report Options:

optGrp1 - RecordSource, RowSource & SourceObject

optGrp2 - Control Name & Event Proc names

optGrp4 - ControlSource, LinkFields, Rpt sorting/grouping field names  
optGrp8 - Event Properties  
optGrp16 - Other Properties  
optGrp32 - Code behind form/report (CBF)  
optGrp64 - Caption, Status & Valid. Text  
optGrp128 - Form or Report Name  
cmdTurbo - Fast Search

General Search Options:

ctlFindonly - Find Only, No Replace  
ctlLogOn - Log Finds/Changes  
ctlReplaceNoAsk - Replace Without Asking  
ctlProperCase - Clean up to Proper Case  
optGrp256 - Search User specified Properties  
optGrp512 - Exclusively Search User Specified Properties  
ctlMatchCase - Case Sensitive Search

Search In Options:

optTables, optQueries, optForms, optReports, optMacros, optModules (set to true or false)

Document Name Like Settings:

ctlTablesLike, ctlQueriesLike, ctlFormsLike, ctlReportsLike, ctlMacrosLike, ctlModulesLike

Find/Replace Specs:

ctlFindText - Find text  
ctlReplaceText - Replace With text  
ctlWholeWord - Match Whole Word/Name Only

***Forms!zfrmFAR\_FindReplace.DoAction "Find"***

Equivalent to pushing the Find Button on the Find and Replace form.

***Forms!zfrmFAR\_FindReplace.DoAction "DeleteLog"***

Delete the Find and Replace Log.

***Forms!zfrmFAR\_FindReplace.DoAction "ClearList"***

Equivalent to pushing the ClearList button on the Find and Replace form.

***Forms!zfrmFAR\_FindReplace.DoAction "NewItem"***

Equivalent to pushing the New Item button on the Find and Replace form. You can use this to add entries to the List of Find/Replace Specs. Or, preferably you could use the function zFAR\_AddFindSpec described later.

***Forms!zfrmFAR\_FindReplace.DoAction "SetCustomProps", "Clear"***

Removes all custom properties (know also as user-specified properties) from the Active Custom Properties list (marks them as inactive).

***Forms!zfrmFAR\_FindReplace.DoAction "SetCustomProps", "Add", "<MyCustomProperty>"***

Adds custom properties to the Active Custom Properties list. <MyCustomProperty> is in the same format as you see the custom properties displayed in the Active Custom properties list ( e.g. FormControl.FontName).

***Forms!zfrmFAR\_FindReplace.DoAction***

***"RunModuleVariableReport", "<ModuleName>", "<Option>"***

Runs the module variable report. <ModuleName> is the name of the module you desire to run the report on. <Option> is "Print" to print the report and close it, "" to open the report in preview mode, "WriteTable" to write the results to a table and close the report. With all options the function does not return control until the module variable report is closed.

***Forms!zfrmFAR\_FindReplace.DoAction "OpenXref"***

Opens the Cross-reference form. Once this is open the following are available:

***Forms!zfrmFAR\_XRef.DoAction "SetControl", "<ControlName>", <Value>***

Sets the values of various controls in the proper manner (so that any necessary event procedures fire).

***Forms!zfrmFAR\_XRef.DoAction "Generate"***

Equivalent to pushing the Generate button.

***Forms!zfrmFAR\_XRef.DoAction "Report"***

Equivalent to pushing the Report button.

***Forms!zfrmFAR\_FindReplace.DoAction "OpenSetPropertyWizard"***

Opens the Set Control Property Wizard form. Once this is open the following are available:

***Forms!zfrmFAR\_SetControlProperty.DoAction "SetControl", "<ControlName>", <Value>***

Sets the values of various controls in the proper manner (so that any necessary event procedures fire).

***Forms!zfrmFAR\_SetControlProperty.DoAction "Go"***

***Forms!zfrmFAR\_FindReplace.AddFindSpec "<FindText>", "<ReplaceText>", <WholeWord>***

Adds a Find/Replace specification. Yet another way to add Findspecs.

# Registration/Ordering

## ***Find and Replace 9.0***

This is not free software. You may not use this software beyond the initial 30 day evaluation period unless you register the software. The price to register this version of the software is \$37 (if you would like a copy on CD-ROM please include an additional \$8). Payment must be in US dollars, payable to Rick Fisher Consulting, and should be sent to Rick Fisher Consulting, 22 Peninsula Rd., Belvedere, CA 94920. Include your name, company name, and address with your registration fee. If you are registering multiple copies, include the names/company names for all copies (or alternatively specify a department name and company name; the codes will be issued as Copy #1, Copy #2, ...). You may pay via Paypal to [rfisher@rickworld.com](mailto:rfisher@rickworld.com). Visa, MasterCard, American Express, and Discover/Novus credit cards are also accepted; include the cardholder name, card number, and expiration date. You may FAX your order to 415-435-6721, or send it via Email by clicking the Email button on the registration/order form. Other ordering options may be available on the web site ([www.rickworld.com](http://www.rickworld.com)).

If you submit an order or check request to your purchasing department you might also want to send me an E-mail telling me to expect it. Often, only a check gets sent (with no registration form or contact information) so I have no way of knowing who to register the software to and send the registration codes to.

To access the registration/order form provided in Find and Replace, click the "About" button on the Find and Replace form and then click the Order Form button. You may fill out this form, print it, and send it in with your registration fee. This form has information on other registration options like upgrading from earlier versions of Find and Replace.

When payment is received you will be sent a registration number that can be recorded in the software via the software's registration code screen. To get to the registration code screen click the 'About' button on the main Find and Replace screen, and then click the 'Enter Registration Code' button. Once the registration code is entered the software will indicate that the copy is registered and features only available to registered users will be enabled.

# Version Information

Note: dates are mm/dd/yy

## **ver 9.00k 03/25/11**

This version adds supports for Access 2010 (with the same exception as Access 2007 that macros can only be searched, not modified). Added a 64bit version.

## **ver 9.00j 04/30/10**

This version supports Access 2007, with the exception that macros can only be searched, not modified. Added capability to change paths in linked OLE unbound controls. Now allow Name property to be added to custom properties. Installation via the Access add-in manager is now disabled. You must install by opening the replace9.mde file directly and using the install button. Repl9.ini file now maintained in the same directory as replace9.mde. Other miscellaneous fixes/changes. Added ODBC attachments form (beta feature).

## **ver 9.00i 04/21/05**

Fixed problem where changing multiple form names in one pass did not change all the occurrences. This was a problem for only the form names; items within the form (e.g. control names, recordsources, ...) were changed correctly. The problem also occurred for report, macro, and module names.

## **ver 9.00h 08/20/04**

Fixed problem where macros were not being modified.

## **ver 9.00g 05/31/04**

Added support for Access adp projects. Updated to support Access 2003. Cross-reference now looks at Search user-defined properties option on main form. Fixed module problem when using the name builder. New installation procedure added. Fixed problem where open forms get closed during search. Added new datasheet log view where double clicking on the item takes you to it in design view. Added SubdatasheetName, LinkChildFields, LinkMasterFields to query search. Other minor fixes/enhancements.

## **ver 9.00f 06/24/02**

Miscellaneous fixes and minor enhancements.

## **ver 9.00e 07/02/01**

Updated to support Access 2002 (XP). Fixed bug in cross-reference report when Generate Cross-Reference for Module Functions was selected whereby a function name was not recognized (and therefore not cross-referenced) if the function declaration had a line continuation before the left parenthesis. Also, during a normal Find and Replace operation, when text was found in a module, the incorrect function name would be indicated if the function declaration had a line continuation before the left parenthesis. Added AddFindSpec method to API. Added features in Beta test (reattachment wizard and field type change wizard).

## **ver 9.00d 11/14/00**

Cross-reference reports now properly locate invocations of forms/reports in code using the New keyword (e.g. code such as dim abc as new form\_myform). TableFieldValue searches now allow searches of attached SQL tables (added the dbSeeChanges option). When Find and Replace must refresh the link to an attached view (e.g. a SQL Server view) it now preserves any existing pseudo-index (unlike the linked table manager).

## **ver 9.00c 06/27/00**

Fixed problem with logging "Debug Warning #1" (occurred when modifications were made to a source table of a linked table). Fixed problem where brackets were added in replacement erroneously. Fixed error 7952 in Set Control Property wizard when setting the Name property.

## **ver 9.00b 04/03/00**

Added extra table search option in Options settings that will speed up searches of linked tables. Fixed name builder when used on subforms within a form. Fixed error when attempting to search subform that is within another form that is in design view when Find and Replace is started. Worked around bug in Access where the SourceTableName returned by Access is truncated to 32

characters. Other small enhancements and bug fixes.

**ver 9.00a 03/02/00**

Fixed problem for registered users where 30 day expiration notice would pop-up even though they were registered.

**ver 9.00 02/26/00**

Initial Version for Access 2000 (9.0)

## Where to Find the Latest Version

### ***Internet***

The latest version is available on the World Wide Web at <http://www.rickworld.com>

### ***Postal Service***

If you don't have access to (or prefer not to use) the Internet, you can obtain a CDROM containing the latest versions (for Access 2.0, 95, 97, 2000, 2002, 2003, 2007, 2010) via mail for a fee of \$8. Send in your request with your address to Rick Fisher Consulting, 22 Peninsula Rd., Belvedere, CA 94920 USA.

### ***How to find the version for Access 2.0***

The file name for the version for Access 2.0 is REPL2.ZIP. It can be found in the same places (see above) as the version for Access 2000/2002/2003/2007/2010.

### ***How to find the version for Access 95 (7.0)***

The file name for the version for Access 95 is REPL7.ZIP. It can be found in the same places (see above) as the version for Access 2000/2002/2003/2007/2010.

### ***How to find the version for Access 97 (8.0)***

The file name for the version for Access 97 is REPL8.ZIP. It can be found in the same places (see above) as the version for Access 2000/2002/2003/2007/2010.

# Contact Information

For bug reports, suggestions, inquiries, or registration, contact Rick Fisher in one of the following ways.

***E-Mail:***

rfisher@rickworld.com

***Postal Service:***

Rick Fisher  
Rick Fisher Consulting  
22 Peninsula Rd.  
Belvedere, CA 94920

***FAX:***

415-435-6721

***Web Site:***

<http://www.rickworld.com/>

# Upgrades

Most minor version updates are free of charge. With such updates, you simply need to obtain a new copy of the software (see "Where to find the most recent version") and your registration code will work with it. If a version update is not free of charge, your registration code will not work with it. Major version upgrades (e.g. 8.0 to 9.0) are not free.

If you wish to upgrade from prior major versions of Find and Replace (i.e. 2.0, 7.0, or 8.0) please see the order form in Find and Replace 9.

# License, Warranty, etc.

Find and Replace Software, Copyright 1993-2001 Rick Fisher, All Rights Reserved

## ***Find and Replace 9.0***

### **DISCLAIMER OF WARRANTY**

THIS SOFTWARE AND DOCUMENTATION ARE PROVIDED "AS IS" AND WITHOUT WARRANTIES AS TO PERFORMANCE OF MERCHANTABILITY OR ANY OTHER WARRANTIES WHETHER EXPRESSED OR IMPLIED. BECAUSE OF THE VARIOUS HARDWARE AND SOFTWARE ENVIRONMENTS INTO WHICH THIS PROGRAM MAY BE PUT, NO WARRANTY OF FITNESS FOR A PARTICULAR PURPOSE IS OFFERED. GOOD DATA PROCESSING PROCEDURE DICTATES THAT ANY PROGRAM BE THOROUGHLY TESTED WITH NON-CRITICAL DATA BEFORE RELYING ON IT. ALSO, PRIOR TO THE USE OF THIS SOFTWARE WITH ANY DATA, A COMPLETE BACKUP OF THE DATA SHOULD BE MADE (AND RETAINED UNTIL IT IS DETERMINED THAT THE MODIFICATIONS MADE BY THIS SOFTWARE ARE CORRECT AND HAVE HAD NO UNDESIRE EFFECTS). THE USER MUST ASSUME THE ENTIRE RISK OF USING THE PROGRAM. ANY LIABILITY OF THE SELLER WILL BE LIMITED EXCLUSIVELY TO PRODUCT REPLACEMENT OR REFUND OF PURCHASE PRICE.

### **LICENSE AGREEMENT**

You should carefully read the following terms and conditions before using the software.

#### ***Unregistered Version:***

You are hereby licensed to 1) use the unregistered shareware version of the software for a 30 day evaluation period, 2) make as many copies of the unregistered shareware version of this software as you wish, 3) give exact copies of the unregistered shareware version of this software to anyone, and 4) distribute the Shareware version in its unmodified form via electronic means.

You are specifically prohibited from charging, or requesting donations, for any such copies, however made, and from distributing the software with other products (commercial or otherwise) without prior written permission, with one exception: Disk Vendors approved by the Association of Shareware Professionals are permitted to redistribute the software, subject to the conditions in this license, without specific written permission.

#### ***Evaluation and Registration:***

This is not free software. You may not use this software beyond the initial 30 day evaluation period unless you register the software. Please see the Registration/Ordering topic for information on pricing/ordering.

#### ***Use of Registered Version:***

One registered copy of this software may either be used by a single person who uses the software personally on no more than two computers, or installed on a single workstation used non-simultaneously by multiple people (this excludes terminal server type configurations), but not both.

You may access the registered version through a network, provided that you have obtained individual licenses for the software covering all workstations that will access the software through the network. Each workstation must have its own license, regardless of whether usage is concurrent or at different times.

# ADP Support

Access projects, adp files, are supported with release 9.00g. However there are some limitations.

## **Limitations**

While F&R can often change table field names, sometimes it cannot because of SQL dependencies. In this case you will get an error message and the log should properly indicate that the field was not changed. Of course you can manually change a field name in a table and then use Find and Replace to change it in your other objects.

Searching table contents (data) via the Search user-defined properties option does not work with adp's.

Change Field Type Wizard not available

Table Field cross-reference not supported in adps

Table Reattachment wizard not supported (for obvious reasons).

## Other Utilities

These other utilities are not official features of Find and Replace. They are not accessible unless you enable features in beta test. When a registered user enables features in beta test, a button captioned "Other" appears beneath the "Set Prop" button. Clicking on the "Other" button brings up this form to enable you to select one of the utilities.

